

Integrated Regional Transportation Select Committee

April 29th, 2019

Comox Valley Regional District

Outline

- **MoTI Vision, Mission and Goals**
- **What MoTI does?**



What MoTI Vision

Our Vision...

To have a fully integrated transportation system that advances environmental, economic and social objectives, and moves goods and people safely within British Columbia and to markets beyond.

South Coast Region

- The South Coast Region includes 9211 kilometres of highways and roads from Vancouver Island, including the Gulf Islands, as far east as Lytton to as far north as the Pemberton Valley.
- The South Coast Region has 2 districts; Vancouver Island District and Lower Mainland District



Overview of MoTI Roles by Program Area

Capital Expansion Program

- Project Development, design stages and project delivery

Rehab & Maintenance

- Administer highway Road and Bridge Maintenance Agreements, Line Painting Agreements and Electrical service Agreements.

District Initiatives

- Highway Operations
- Development Approvals
- Project Delivery
- Emergency Response

Technical Advice to Outside Agencies

- Local Governments and First Nations
- Community and Stakeholder Committees
- Safety Committees

Programming Input

- Regional Program and Project Development

Vancouver Island District

- The Vancouver Island District is an operational centre for three service areas:
 - North Island (Service Area 3)
 - Central Island (Service Area 2)
 - South Island (Service Area 1)



Highway Operations



Road and Bridge Maintenance Agreement Mainroad North Island

See an issue on North Island Highways?
REPORT IT!
1-877-215-7122
Courtenay | Campbell River | Gold River | Port Hardy

mainroad
24 HR HOTLINE

BRITISH COLUMBIA DriveBC
www.drivebc.ca

For current road conditions on Twitter,
safely follow @DriveBC / @DriveBC_VI

A graphic for Mainroad's 24-hour hotline. It features a yellow truck in the background. The text includes the phone number 1-877-215-7122 and lists several locations: Courtenay, Campbell River, Gold River, and Port Hardy. There is also a Twitter icon and a mention of following @DriveBC and @DriveBC_VI for road conditions.

Pavement Marking Lafrentz



Electrical Maintenance Agreement- Raylec Power

Development Approvals

A screenshot of the FrontCounter BC website interface. The page is titled "FrontCounter BC" and is divided into several sections. On the left, there is a navigation menu with "Operations" and "Helpful Links". The main content area is titled "Roads / Highways" and is divided into three sub-sections: "Emergency Contact Information", "Road / Highway Use", and "Roadways - Crown Land Tenure". The "Emergency Contact Information" section contains a button for "Emergency Contact Information Form". The "Road / Highway Use" section contains buttons for "Highway Access Permits", "Permission to Acquire, Close, Discontinue Land in a Public Use", "Permission to construct works within highway Right-of-Way", "Right-of-Way (for purpose of providing access to highway)", "Forest Road Use Permit", "Special Events", and "Structures Permits". The "Roadways - Crown Land Tenure" section contains buttons for "Roadways - Public", "Roadways - Subdivision", "Sign Permit/Approval", "Preliminary Subdivision Approval", and "Sign Permit - Road Closure".

Operations
FrontCounter BC

FrontCounter BC Links

- [INFO about Natural Resource Applications](#)
- [START a Natural Resource Application](#)
- [MANAGE your Natural Resource Applications](#)
- [WHAT is FrontCounter BC](#)
- [WHERE FrontCounter BC Locations](#)
- [HOW to contact FrontCounter BC](#)
- [NEWS FrontCounter BC](#)

Helpful Links

- [Natural Resource Online Services](#)
- [BCeID](#)
- [BC Land Title & Survey](#)
- [BC Online](#)
- [Burning](#)

Roads / Highways

Emergency Contact Information

- Emergency Contact Information Form

Road / Highway Use

- Highway Access Permits
- Permission to Acquire, Close, Discontinue Land in a Public Use
- Permission to construct works within highway Right-of-Way
- Right-of-Way (for purpose of providing access to highway)
- Forest Road Use Permit
- Special Events
- Structures Permits

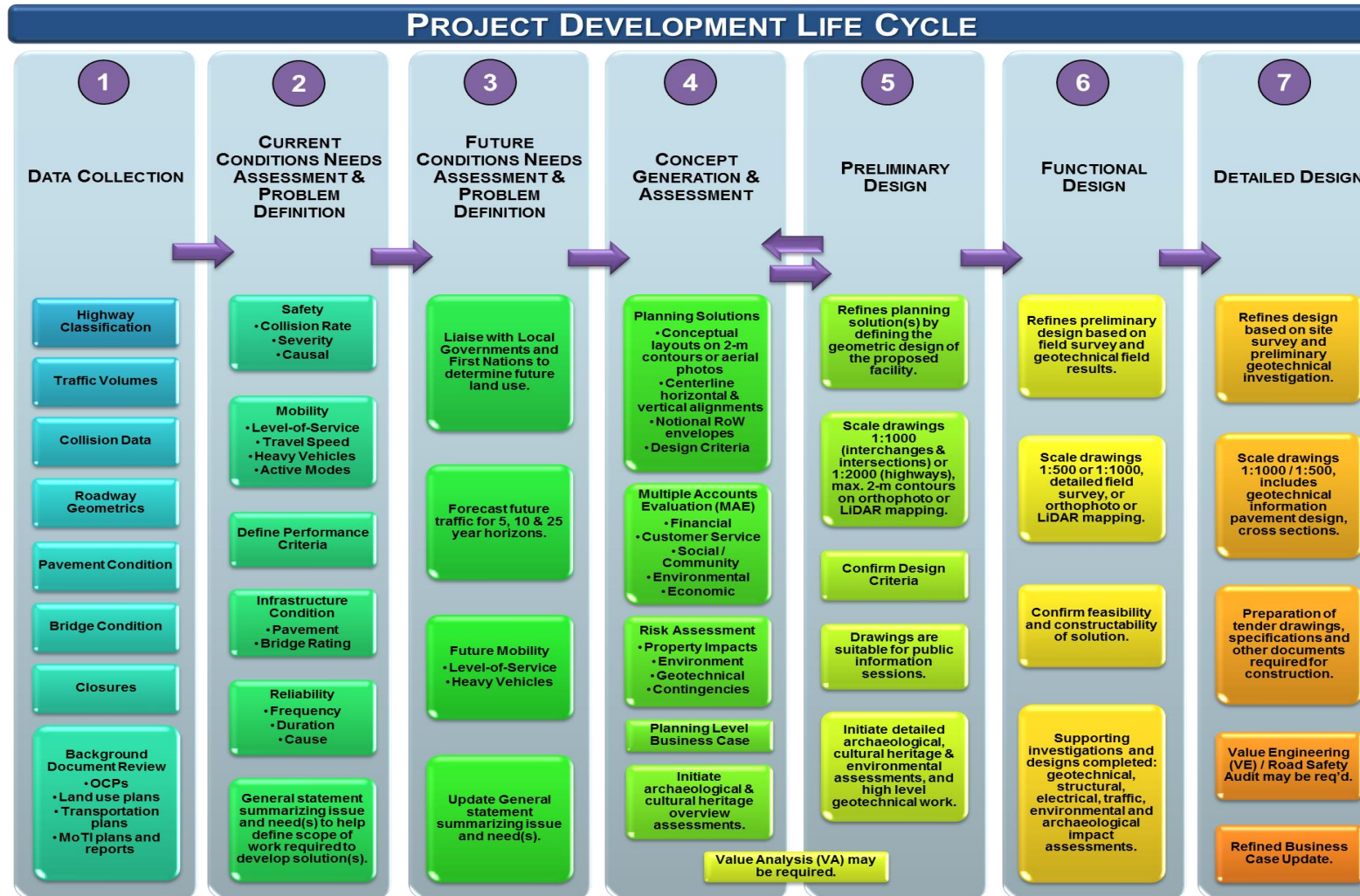
Roadways - Crown Land Tenure

- Roadways - Public
- Roadways - Subdivision
- Sign Permit/Approval
- Preliminary Subdivision Approval
- Sign Permit - Road Closure

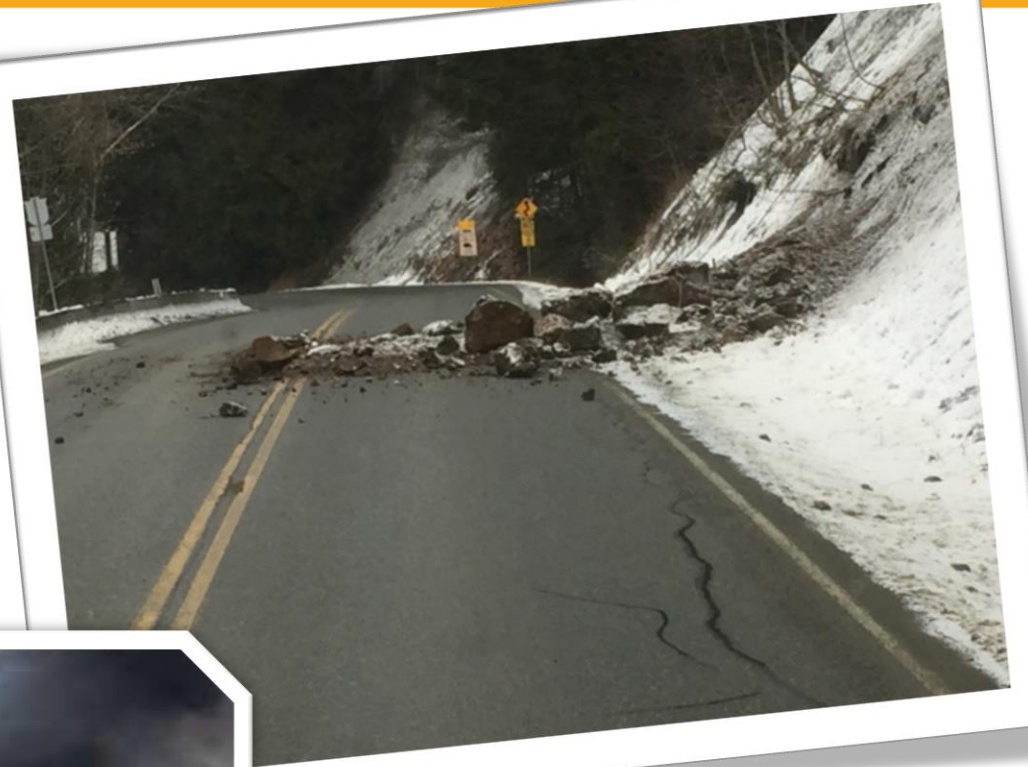
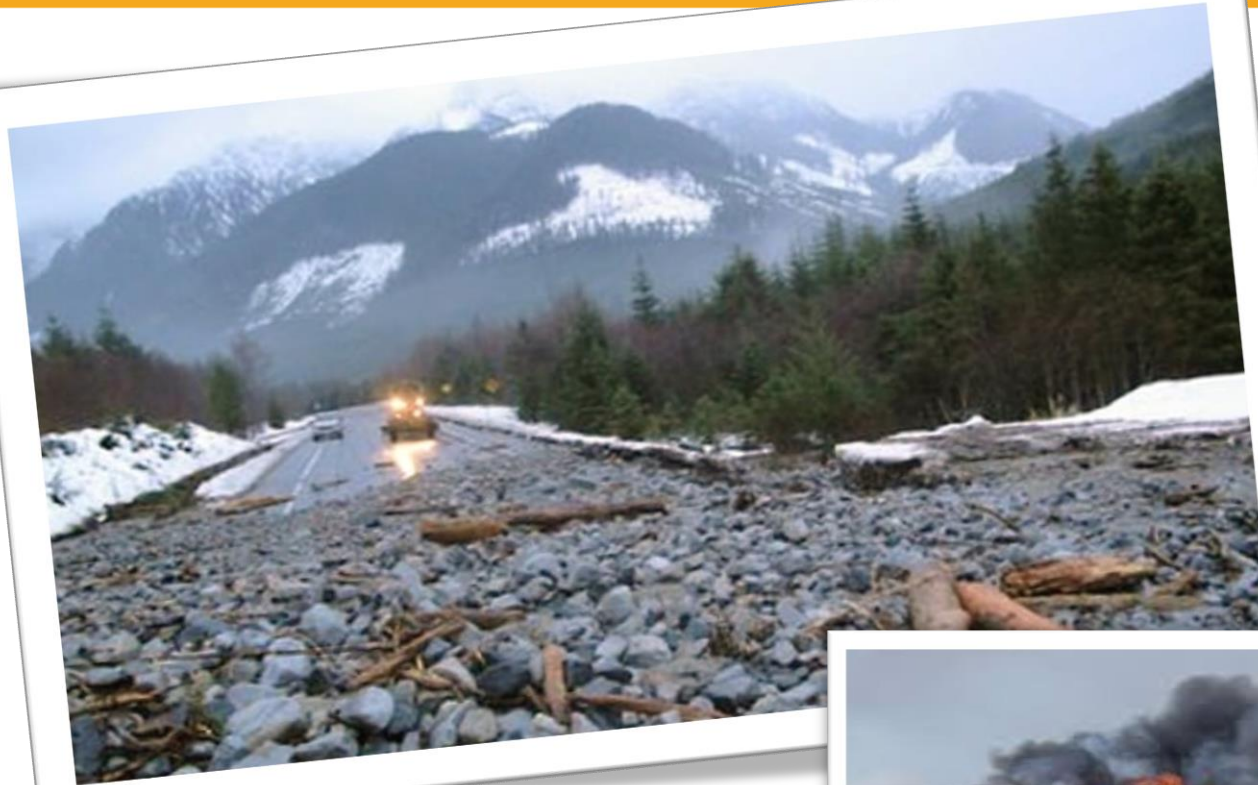
MoTI is responsible for:

- Highway Permits and Approvals
- Rural Subdivision Approvals

Project Delivery



Emergency Response



Questions and Comments

